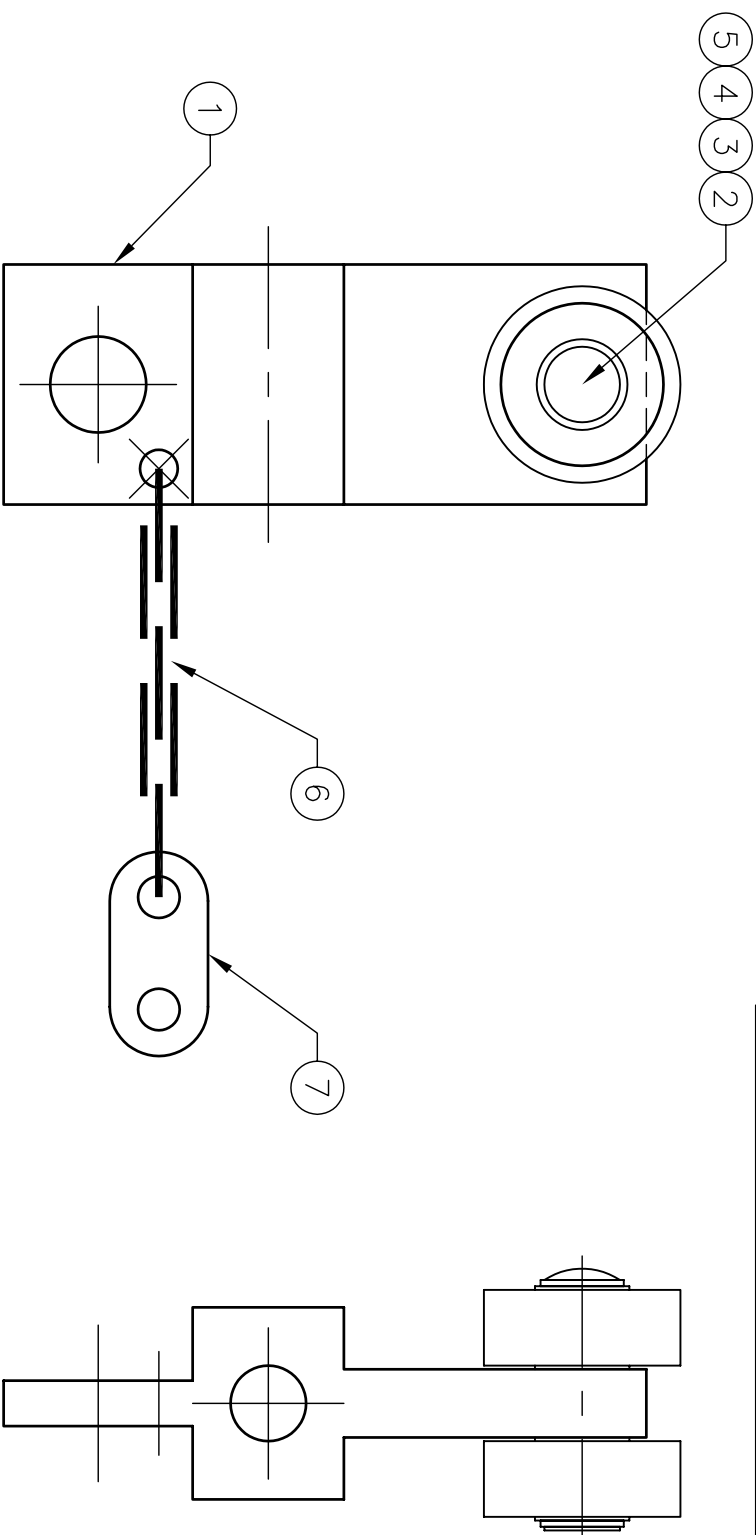


NOTE:  
 LIGHT WEIGHT JACK CHAIN TO BE CUT  
 150mm LONG. OPEN END LINK THREAD  
 CABLE CLAMP THRU' AND CLOSE  
 LINK. REPEAT AT OTHER END TO ATTACH  
 TO ATTACH CHAIN TO CHASSEY.

ITEM	DESCRIPTION	PART No.:	QTY.
1.	NYLON CHASSEY	NYRO-8605	1
2.	MOULDED WHEEL	MGR0-3247	2
3.	RIVET: 3/16" x 1 7/16"	RVRO-3217	1
4.	STEEL WASHER: 3/16"	WSRO-3375	4
5.	4.7x6.3x12.0 BUSH		2
6.	LIGHT JACK CHAIN	CFH0-6200	1
7.	CABLE CLAMP CLIP	BSRO-2943	1



Hall Stage Ltd.  
 Unit 4  
 Cosgrove Way  
 Luton  
 Bedfordshire  
 LU1 1XL  
 Tel: 0945 345 4255 Fax: 0945 345 4256  
 e-mail: sales@hallstage.com  
 web: www.hallstage.com



UNLESS OTHERWISE STATED ALL DIMENSIONS ARE IN MILLIMETRES  
 REMOVE ALL BURS AND SHARP EDGES

TOLERANCE:	ANGLES:	PROJECTION:
X ±1.0mm	±0.25°	1st angle
XX ±0.3mm		
XXX ±0.1mm		

© THIS DRAWING MUST NOT BE COPIED OR REPRODUCED IN ANY MANNER WITHOUT THE WRITING APPROVAL OF HALL STAGE LTD.

DRNGC

DATE  
 30.09.02

CHD

TITLE ASSEMBLY:  
 T60 REARFOLD RUNNER

APPD

DRG NO T6HR-1081

ISSUE:  
 A

MOD

ISSUE

SPEC: NATURAL

MATL: 1" x 1-1/4" BLACK NYLON

A4 SCALE

1:1