

T60 Handline Track Assembly Diagram

Hall Stage

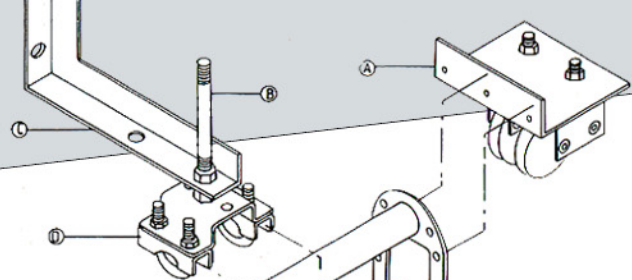
PURVEYORS OF INNOVATIVE ENGINEERING SINCE 1998

Unit 4, Cosgrove Way, Luton, Beds, LU1 1XL
Tel: 0845 345 4255 Fax: 0845 345 4256
sales@hallstage.com www.hallstage.com

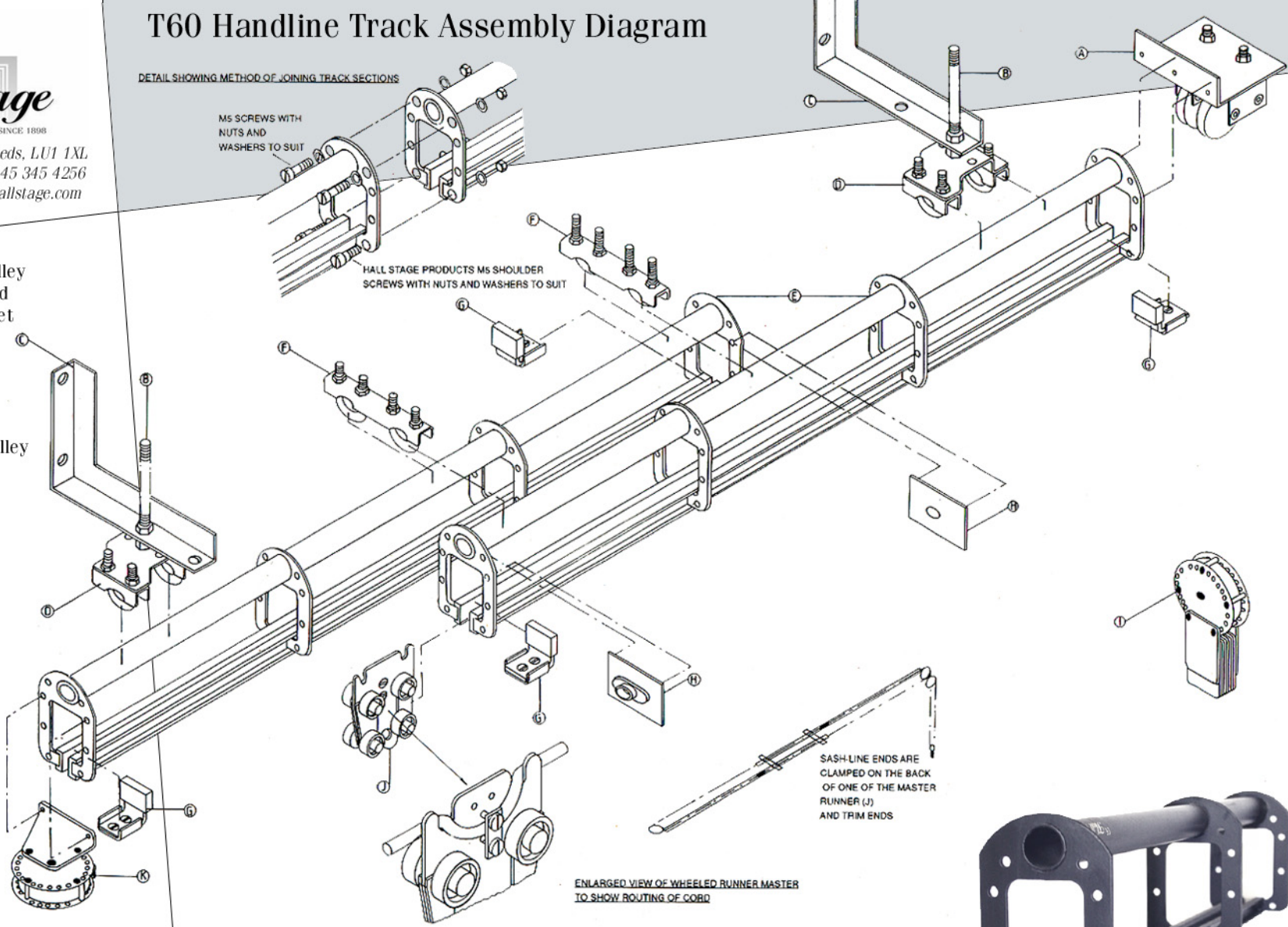
DETAIL SHOWING METHOD OF JOINING TRACK SECTIONS

M5 SCREWS WITH NUTS AND WASHERS TO SUIT

HALL STAGE PRODUCTS M5 SHOULDER SCREWS WITH NUTS AND WASHERS TO SUIT



- A) T60 Handline Head Pulley
- B) T60 M10 x 150mm Stud
- C) T60 Face Fixing Bracket
- D) T60 Universal Clip
- E) T60 Straight Section
- F) T60 Overlap Clip
- G) T60 Stop Bracket
- H) T60 Line Guide
- I) T60 Weighted Floor Pulley
- J) T60 Master Carrier
- K) T60 Return Pulley



SASH-LINE ENDS ARE CLAMPED ON THE BACK OF ONE OF THE MASTER RUNNER (J) AND TRIM ENDS

ENLARGED VIEW OF WHEELED RUNNER MASTER TO SHOW ROUTING OF CORD

